

Health Benefits of Cycling

Cycling is believed to help strengthen the immune system and improve one's mental health and coordination. Additionally, cycling is a great way for people to connect to their community, meet new friends, burn calories, keep weight down and increase their metabolism.



Park Rules

- Parks hours: sunrise to sunset.
- No alcohol permitted.
- All pets must be leashed. Owners must clean up after their pets.
- All park rules and regulations apply.
- To report vandalism or violations, please call 630-232-4542. In emergency situations, please dial 911.

Courtesy Counts

- **Be Aware** - Know where other trail users are at all times.
- **Stay on the Right** - Don't block the trail or use more than half of the trail width when in a group.
- **Passing** - Wait for good visibility, make sure conditions are safe, and listen for bell or rider alert "on your left."
- **Announce Your Intentions to Pass** - Say "on your left." Wait for the person to respond before making your move.



Bike Safety

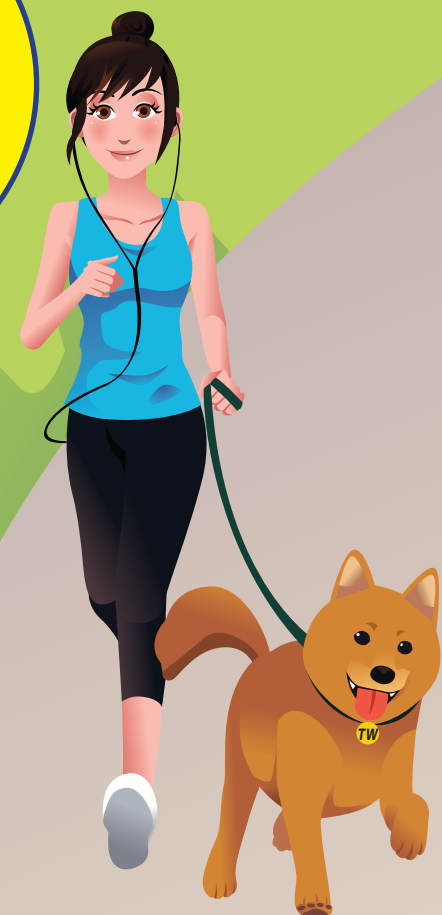
Wear a properly fitted bicycle helmet. If in an accident, a bicycle helmet can reduce the risk of head injury by 85% and the risk of brain injury by 88%.

Trail Safety

Travel at safe speeds. Slow down for potentially dangerous trail conditions due to water, ice, debris, curves, pedestrians or pets. Obey local speed limits where posted.

Trail Safety

Be aware. Be friendly. Obey all rules. Help keep our parks and trails clean. Do not litter and clean up after pets.



Explore the Fox River Trail

Travel through scenic Island Park, Old Mill Park, and Bennett Park in Geneva along the Fox River Trail.

SHOP. DINE. DISCOVER.



Discover the restaurants and shops located on Third Street and Route 38 in downtown Geneva, just west of the Fox River Trail.

Did you know?

Biking is the official activity in the state of Illinois.

-AND-

Geneva Park District offers 69 miles of trails, 50 parks, and manages over 700 acres of open space.

Did you know?

The Fox River Bike Trail offers more than 40 miles of scenic trails.

- Travel South on the Fox River Trail through Batavia and Aurora.
- Connect to the Illinois Prairie Path in Geneva and travel east through West Chicago and Wheaton.
- Travel north on the Fox River Trail through St. Charles and Elgin and connect to the Great Western Trail to continue your journey west through Sycamore.

Things to see & do

Geneva Park District offers 69 miles of scenic trails.

Check out these interesting stops along the way.

- Explore nature at Peck Farm Park with stops at Hawks Hollow, the Butterfly House, Peck Family Historic House, Silo and more. (See map #32)
- Stone Creek Miniature Golf Course and Links Disc Golf Course are located at Wheeler Park. (See map #45, 54)
- Looking for a fitness center? Stop at BestLife Fitness, located inside Stephen D. Persinger Recreation Center and Sunset Community Center for affordable fitness membership options. (See map #47, 34)
- Splash into fun at Mill Creek Pool or Sunset Pool. (See map #29, 48)
- Explore cultural arts at Playhouse 38, located off Stevens Street by Wheeler Park. (See map #54)



GENEVA

Park District

Bike. Run. Walk.



Stay Connected: genevaparks.org | f i



Stay Connected: genevaparks.org | f i



Enjoy 69 Miles of Trails Throughout Geneva Park District!

Visit Peck Farm Park!

Peck Farm Park is 385-acre park which includes paved and natural trails, a sensory garden, a 19-acre lake, and a butterfly house. Peck Farm Park is a leader in environmental education, offering a wide variety of camps, field trips, and programs for all ages to increase awareness of conservation and the importance of protecting our green space.

Also on the grounds, the 1869 Peck House features a discovery room and a history gallery with interactive exhibits about the history of the Peck family. A silo has been converted into an observation tower that offers commanding views of the park. Hawks Hollow, a unique environmental educational playground invites children and families to explore, touch, climb, learn and play using their imaginations while experiencing the smells, textures and wonders of the natural world.

Peck Farm Park is open year-round and offers visitors a place to slow down and enjoy quality time surrounded by nature.

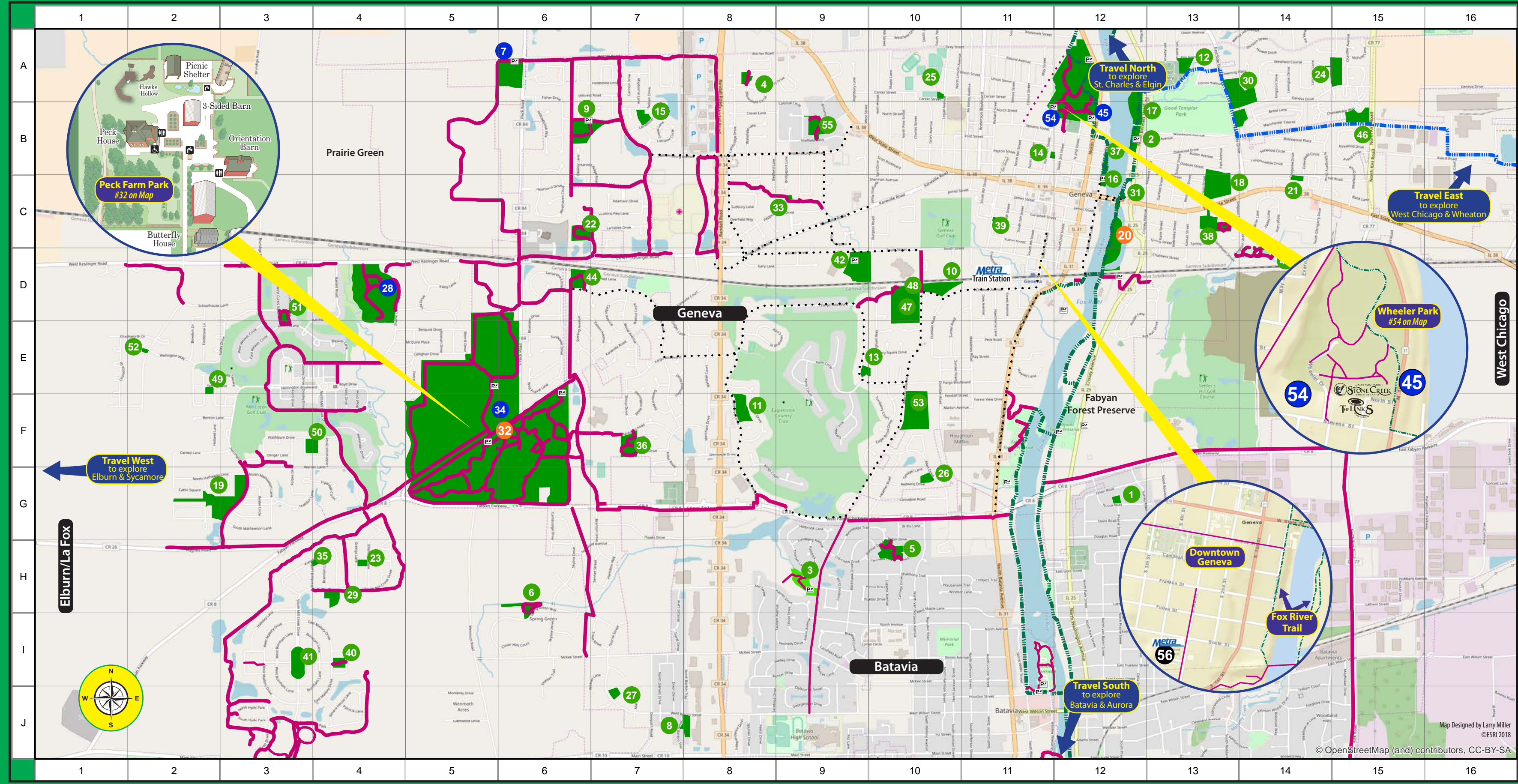
Safety Along the Trails

Guidelines for All Users

- Stay to the right on the trail
- Give warning before passing on the left
- Move off the trail when stopped
- All dogs must be leashed
- Obey all stop signs
- Wear bright or reflective clothing
- Motorized vehicles are prohibited

Guidelines for Cyclists

- Always wear a helmet
- Ride single file
- Use hand signals for turns and stops
- Yield right of way to pedestrians
- Do not stop on trail; move off to side
- When riding at night, equip your bike with headlight and reflectors
- Speed training and racing are prohibited
- Traffic laws apply to cyclists where trail crosses or runs along roads



Map Legend

- Geneva Park District Park
- Geneva Park District Park with Restroom*
- Geneva Park District Park with Restroom* and Bike Repair Station
- 56 Metra Train Station
- Bike/Walking Trail
- Gravel/Unpaved Trail
- Paved Bike Lane
- Fox River Trail
- IL Prairie Path

*Note: some restrooms are seasonal; open April-October.

Geneva Park District Park Legend

1. Batavia Highlands Park	G-12	13. Fargo Park	E-9	25. Marjorie Murray Park	A-10	34. Stephen D. Persinger Recreation Center	F-5	45. Stone Creek Mini-Golf/ Links Disc Golf	B-12
2. Bennett Park	B-12	14. Fourth Street School/Park	B-11	26. Meadows Park	G-10	35. Foundation Park at SPRC	F-5	46. Sunrise Park	B-15
3. Braeburn Park	H-9	15. Frank K. Burgess Park	B-7	27. Michael Arbizzani Park	J-7	36. Preston Park	H-3	47. Sunset Park/Sunset Community Center	D-10
4. Bricher Park	A-8	16. Garden Club Park	C-12	28. Mill Creek Community Park	D-4	37. River Park	B-12	48. Sunset Pool	D-10
5. Carriage Crest Park	H-10	17. Good Templar Acquisition	B-12	29. Mill Creek Pool	H-4	38. Sandholm Woods Park	C-13	49. Terney Park	E-2
6. Clover Hills Park	H-6	18. Harrison Street School/Park	C-13	30. Moore Park	A-13	39. Seventh Street Park	C-11	50. Washburn Park	F-3
7. Community Gardens at Prairie Green	A-5	19. Hathaway Park	C-2	31. Old Mill Park	C-12	40. Shannon Park	I-4	51. Weaver Park	D-3
8. Deerpath Park	J-7	20. Island Park	C-12	32. Peck Farm Park	F-5	41. Somerset Park	I-3	52. Wellington Park	E-1
9. Don Forni Park	B-6	21. Jaycee Park	C-14	33. Butterfly House	F-5	42. South Street Athletic Fields	D-9	53. Western Avenue School/Park	F-10
10. Dryden Park	D-10	22. Kay Lovett Park	C-6	33. Hawks Hollow Nature Playground	F-5	43. Stanley A. Esping Park	D-14	54. Wheeler Park	B-11
11. Eagle Brook Park	F-8	23. Linden Park	H-4	33. Pepper Valley Park	C-8	44. Sterling Manor Park	D-6	55. Williamsburg Park	B-9
12. Elm Street Park	A-13	24. Lions Park	A-14						

Connect with us!

Online at genevaparks.org | [f](#) [i](#)

Apps to check out:
 Map My Run | Map My Ride

Available on the App Store | Google Play

Map Designed by Larry Miller ©ESRI 2018 © OpenStreetMap (and) contributors, CC-BY-SA